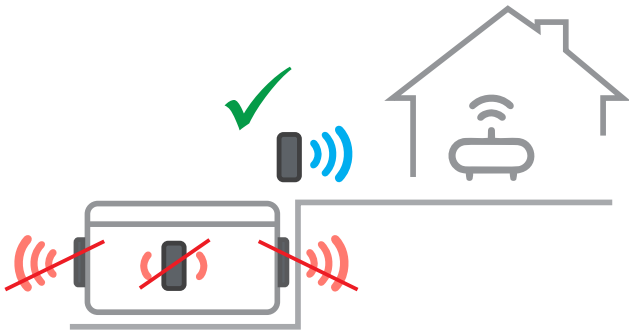


**Step 1:** Locate SmartLink module in position with best line of sight to router

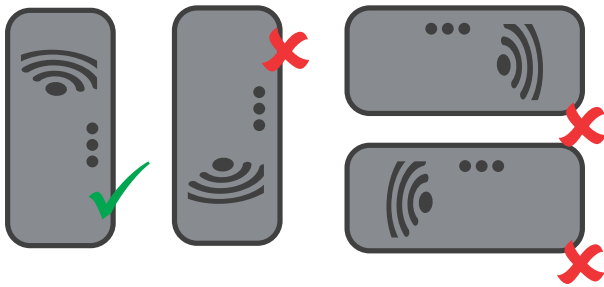
*Note: Do not fix module permanently until app setup is complete and best WiFi signal location determined*



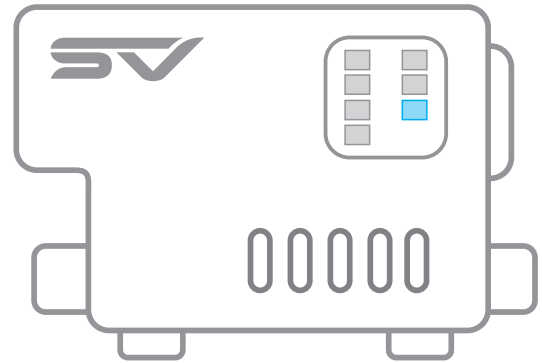
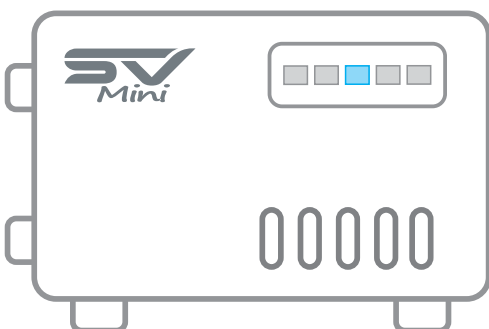
If spa in pit or under deck, locate module above ground in a weather protected area with line of sight to router (longer data cable may be required; max 10m)



**Note:** Module MUST be orientated vertically to receive adequate signal strength with WiFi logo at the top to maintain water protection

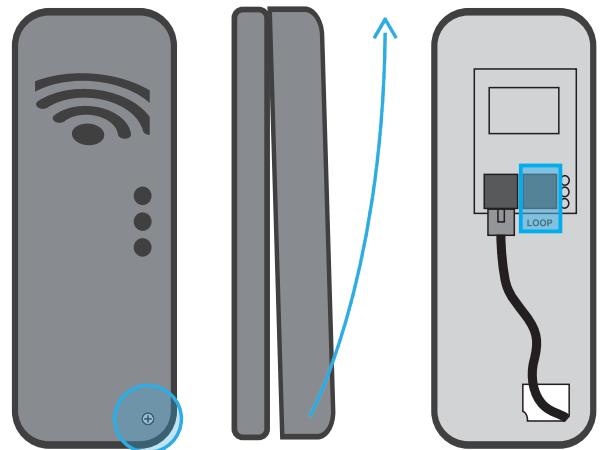


**Step 2:** Connect data cable from SmartLink module to spa control EXP1 socket



EXP1 socket only

**Note:** If EXP1 socket already populated, remove that cable from EXP1 and connect it to the LOOP socket inside module. Ensure data cable coming from SmartLink connects directly to EXP1 socket

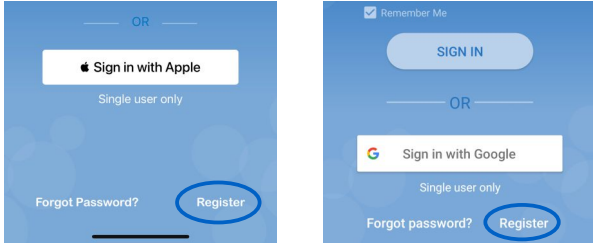


**Step 3:** Download Spanet SmartLink app



**Step 3:** Register and/or login to app

**Note:** If the app is to be used across multiple devices (which use different Apple / Google accounts) then you must create an account using the **Register** option. For additional devices login with the email and password you registered. Do NOT register another account

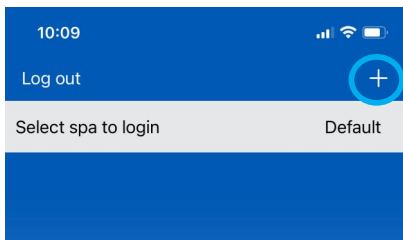


If the app is only to be used on one or more devices sharing the same Apple/Google account, you can use the respective sign in buttons below



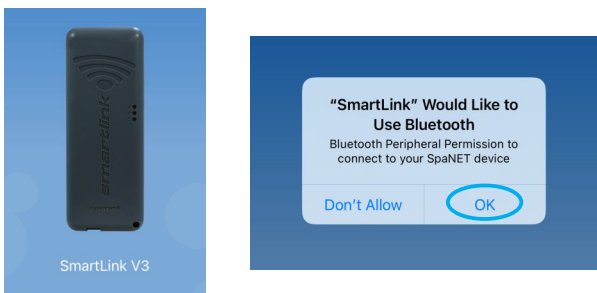
**Step 4:** Add spa to user account

**Note:** A spa can only be setup/accessed on one user account, however multiple spas can be added to the same user account



You will require your router WiFi password with you

**Step 5:** Select SmartLink V3 model

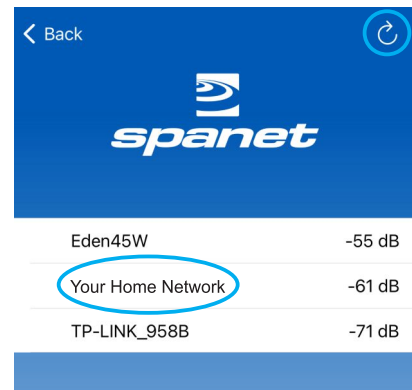


**Note:** Bluetooth is used for module setup, allow access

**Step 6:** Select SV module to begin scanning for local WiFi networks



**Step 7:** Select WiFi network to connect spa to

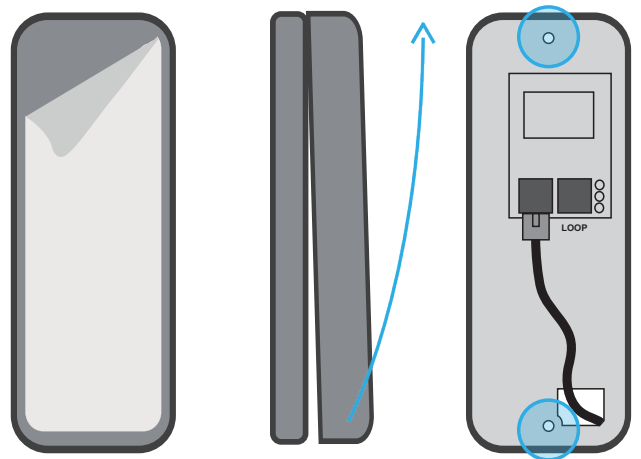


**Note:** If no WiFi network found, relocate module to a better position and use the refresh button to conduct a new WiFi scan to see if signal has improved. Signal strengths closer to 0 are stronger.

**Step 8:** Enter password for your WiFi network

**Step 9:** Enter a spa name and setup is complete

**Step 10:** Fix module position using adhesive gasket or screw mounts inside module



**Further Info**

[spanet.com.au/spa-accessories/smartlink](http://spanet.com.au/spa-accessories/smartlink)